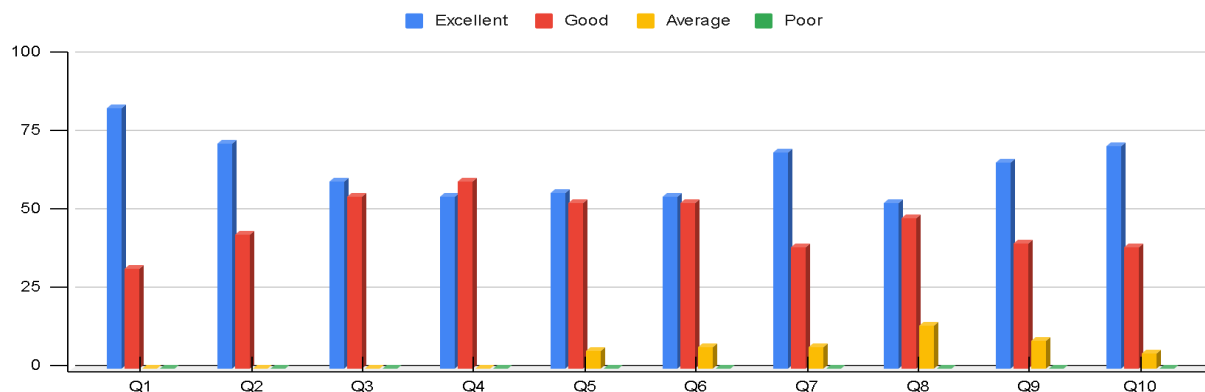


GOVERNMENT COLLEGE FOR MEN, KURNOOL
Internal Quality Assurance Cell
Analysis of Students Feedback on Curriculum (2021-22)
Samples - 123

| Question No. | Question | Excellent | Good | Average | Poor |
|---------------------|--|------------------|-------------|----------------|-------------|
| Q1 | Academic content | 49 | 59 | 12 | 3 |
| Q2 | Coverage of Syllabus in classroom | 48 | 61 | 13 | 1 |
| Q3 | Coverage of modern / advanced topics | 38 | 62 | 19 | 4 |
| Q4 | How do you rate the relevance of units in syllabus relevant to the course? | 46 | 61 | 14 | 2 |
| Q5 | How do you rate the sequence of units in the syllabus relevant to the course? | 42 | 65 | 14 | 2 |
| Q6 | Rate the size of syllabus in terms of load of the student | 34 | 68 | 19 | 2 |
| Q7 | Scope for skill development/employability/entrepreneurship in the course offered | 48 | 54 | 17 | 4 |
| Q8 | How do you rate the courses that you have learnt in relation to your life application? | 45 | 58 | 16 | 4 |
| Q9 | Availability of Text books / study material | 49 | 57 | 13 | 4 |
| Q10 | Usefulness of test and assignments | 53 | 53 | 14 | 3 |

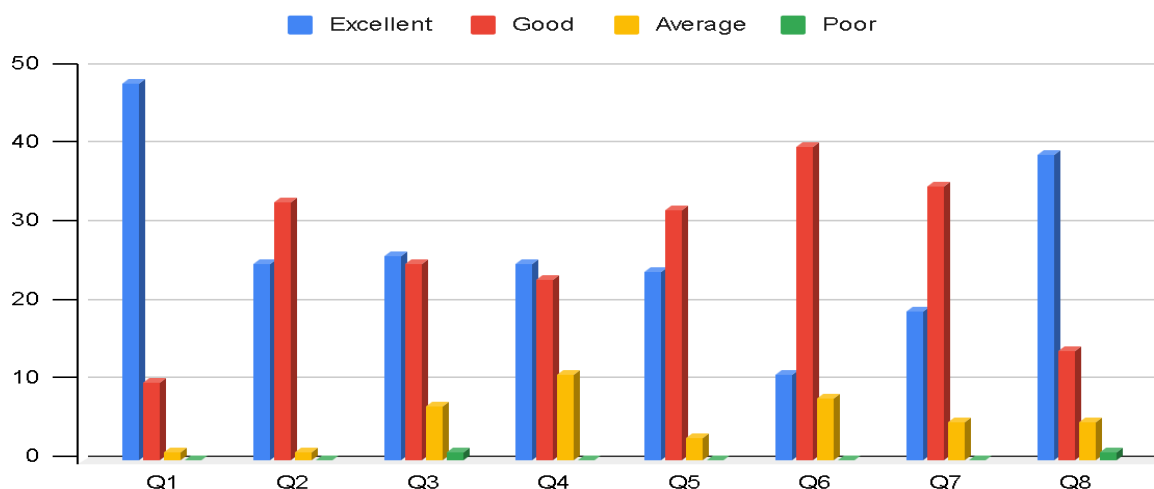
Feedback on Curriculum by Students (2021-22)



GOVERNMENT COLLEGE FOR MEN, KURNOOL
Internal Quality Assurance Cell
Analysis of Alumni Feedback on Curriculum (2021-22)
Samples - 59

| <u>Q.No</u> | Question | Excellent | Good | Average | Poor |
|-------------|---|-----------|------|---------|------|
| Q1 | How do you rate the content in the syllabus | 48 | 10 | 1 | 0 |
| Q2 | Course content delivery | 25 | 33 | 1 | 0 |
| Q3 | Curriculum intellectually stimulates you | 26 | 25 | 7 | 1 |
| Q4 | The syllabus creates any interest to pursue post graduation/Research | 25 | 23 | 11 | 0 |
| Q5 | The subject relevance to your job and future aspirations | 24 | 32 | 3 | 0 |
| Q6 | Programme help in holistic personality development of the student | 11 | 40 | 8 | 0 |
| Q7 | How do you rate the courses that you have learnt in relation to your real life application? | 19 | 35 | 5 | 0 |
| Q8 | Benefits you derived from the course | 39 | 14 | 5 | 1 |

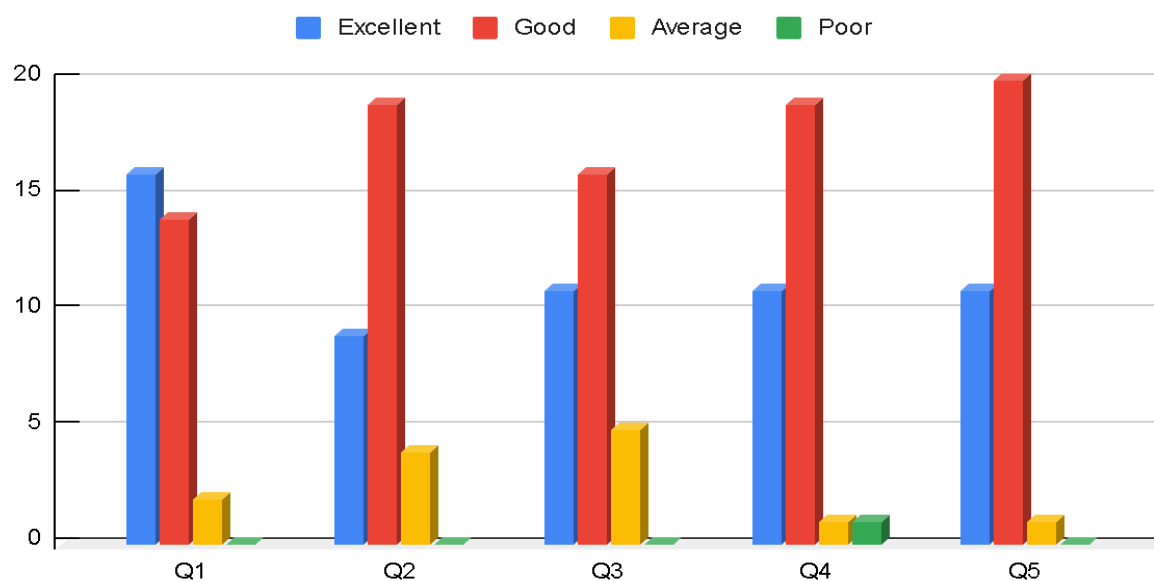
Feedback on Curriculum by Alumni (2021-22)



GOVERNMENT COLLEGE FOR MEN, KURNOOL
Internal Quality Assurance Cell
Analysis of Teachers Feedback on Curriculum (2021-22)
Samples - 32

| Question No. | Question | Excellent | Good | Average | Poor |
|--------------|--|-----------|------|---------|------|
| Q1 | Suitability of the syllabus to the course | 16 | 14 | 2 | 0 |
| Q2 | Is the syllabus need based | 9 | 19 | 4 | 0 |
| Q3 | The syllabus/course has good balance between theory and application | 11 | 16 | 5 | 0 |
| Q4 | Sufficient number of prescribed books are available in the library | 11 | 19 | 1 | 1 |
| Q5 | The course/syllabus has increased my knowledge and perspective in the subject area | 11 | 20 | 1 | 0 |

Feedback on Curriculum by Teachers (2021-22)



GOVERNMENT COLLEGE FOR MEN, KURNOOL
Internal Quality Assurance Cell
Analysis of Employers Feedback on Curriculum (2021-22)
Samples - 2

| Question No. | Question | Meets the employers requirement | Satisfactory | Need to improve |
|--------------|--|---------------------------------|--------------|-----------------|
| Q1 | Theoretical and practical applications of curriculum | 1 | 1 | 0 |
| Q2 | Technical skills for employability | 0 | 2 | 0 |
| Q3 | Creativity and innovation | 0 | 0 | 2 |
| Q4 | Relevance of curriculum | 1 | 0 | 1 |
| Q5 | Communication and soft skills | 0 | 1 | 1 |

The screenshot shows a Google Forms interface with the following questions and responses:

- Question 1:** Name of the Employer Organization and location (2 responses)
 - Yamini Nayini
 - Sharma-TVSTS-ICI
- Question 2:** Please enter your Name (2 responses)
 - Yamini Nayini
 - Sharma
- Question 3:** Designation (2 responses)
 - HR recruiter

The browser tabs at the top include WhatsApp, 2020-21 - Google Drive, Employer feedback - Google F..., Employer feedback (Response: x, and Feedback 2020-21 - Google S... The system clock at the bottom right shows 16:54 on 11-05-22.

